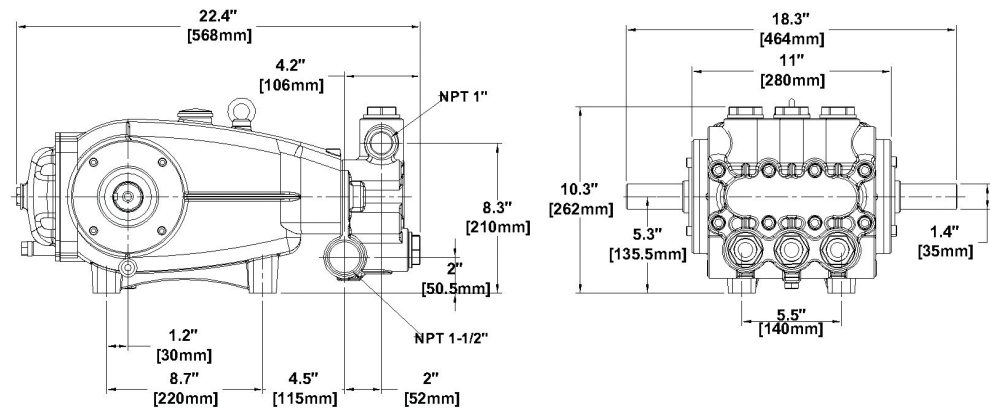


# ARIMITSU

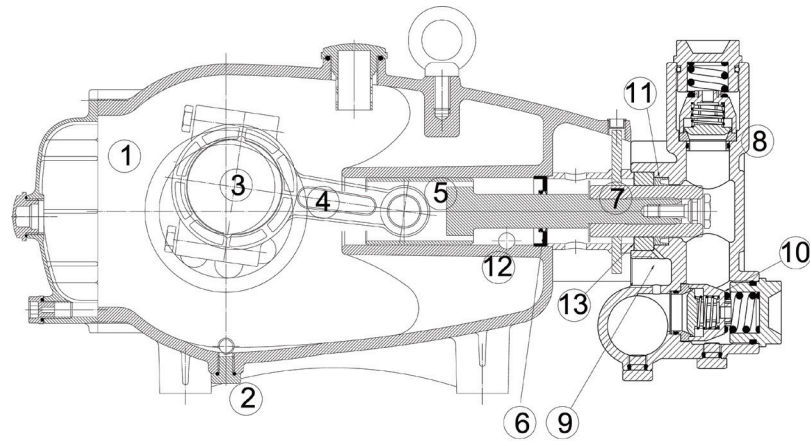
## PROVEN PLUNGER PUMPS

### DIMENSIONS (mm/in.)



### CUTAWAY

- 1 High strength, lightweight aluminum crankcase
- 2 Three oil sump drain ports, one bottom and two side, provide access in a variety of installations and more complete draining of crankcase
- 3 Forged crankshaft is machined for low friction, quiet operation and high efficiency
- 4 High strength connecting rods are tolerance matched for extended life and low friction operation
- 5 High polish stainless steel plunger rods for smooth operation and even wear
- 6 Superior oil seal and support to eliminate oil leaks
- 7 Proprietary blend, solid ceramic plungers for long wear and increased thermal shock resistance
- 8 Stainless Steel manifold for strength and corrosion resistance, machined to optimize fluid flow and performance while extending useful life
- 9 Liquid-cooled, low drag seals provide long life, extended run-dry ability and increased suction lift
- 10 Stainless steel valve construction with PVDF cages, duplex stainless steel seats, and polished valve seating surfaces for efficient operation
- 11 Mechanically-loaded, polymer seals require no adjustment and self compensate for wear
- 12 Balanced flow crankcase ensures lubrication and quiet operation
- 13 Slide-in seal cases mean no special tools are required, making seal replacement easy



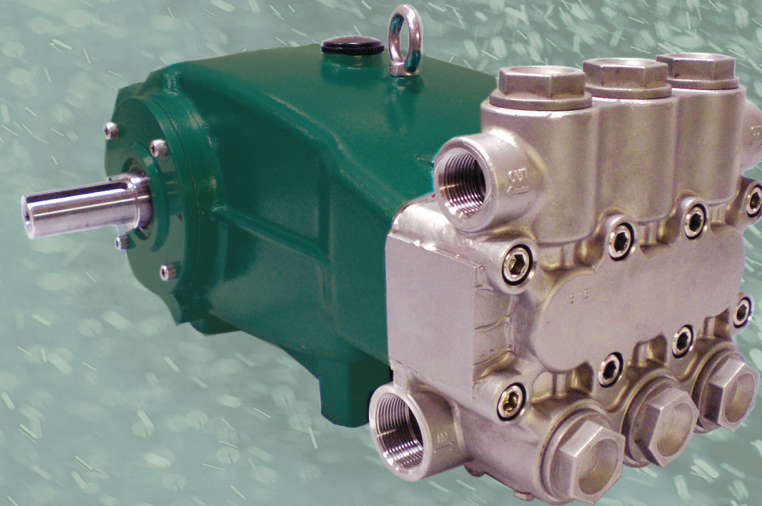
Arimitsu of North America, Inc.  
 700 McKinley St. NW  
 Anoka, MN 55303  
 ph: 763.433.0303  
 fax: 763.433.0404  
 www.arimitsupumps.com



Rev.1, Model 3615, (3-12)  
 Part # .141

# ARIMITSU

## PROVEN PLUNGER PUMPS



## 30 Series

### Model 3615

### FEATURES

- Triplex pumps provide smooth liquid flow
- Special polymer seal system for greater temperature and chemical resistance in continuous operation
- Balanced flow crankcase design and precision machining ensures uniform lubrication and quiet operation
- One piece stainless steel manifold design improves fluid flow, decreases noise and service time
- Three oil drain ports for accessibility options

### QUALITY

- Stainless steel valves with polished valve seats and hardened seating surfaces for efficient operation
- Precision ground ceramic plungers utilize a proprietary material blend for long life and increased thermal shock resistance
- Stainless steel manifold offers strength and corrosion resistance
- Chemically-resistant, polymer seals provide superior wear and durability versus traditional textile rubber seals
- Oversized crankshaft bearings for long life and quiet operation

### MAINTENANCE

- No special tools required for repair or maintenance
- Fluid end is easily serviced without entering crankcase
- Easy access seal case and valve assemblies
- Seals require no adjustment or special tools

### SPECIFICATIONS

| Model 3615       | US          | METRIC     |
|------------------|-------------|------------|
| Flow             | 36 gpm      | 135 lpm    |
| Pressure         | 1500 psi    | 105 bar    |
| RPM              | 800         | 800        |
| Inlet Pressure   | 0 to 70 psi | 0 to 5 bar |
| Inlet            | 1-1/2"      | 1-1/2"     |
| Outlet           | 1"          | 1"         |
| Oil requirement  | 5.3 qts.    | 5 l        |
| Shaft Dia.       | 1.378"      | 35 mm      |
| Max Liquid Temp. | 160°F       | 71°C       |
| Shaft Location   | Both sides  | Both sides |
| Weight           | 125 lbs.    | 57 kg      |

### HORSEPOWER REQUIREMENTS

| 3615 | Pressure (psi) |       |      |      |      |      |      |
|------|----------------|-------|------|------|------|------|------|
|      | RPM            | GPM   | LPM  | 800  | 900  | 1000 | 1200 |
| 400  | 18.5           | 72.4  | 9.8  | 11.0 | 12.2 | 14.7 | 18.5 |
| 600  | 27.3           | 108.6 | 14.5 | 16.4 | 18.2 | 21.8 | 27.3 |
| 800  | 36.0           | 136.1 | 19.2 | 21.6 | 24.0 | 28.8 | 36.0 |

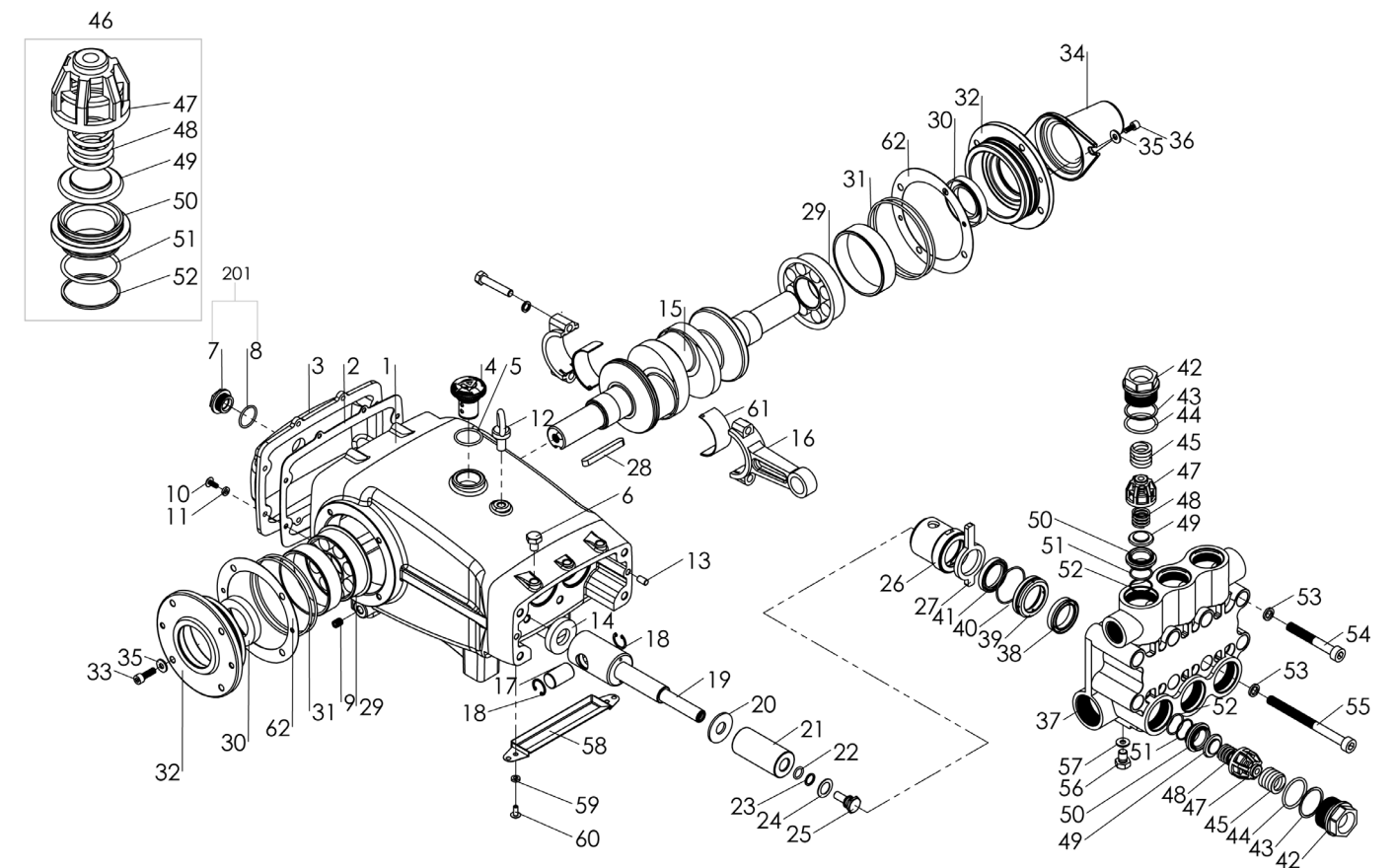


## Parts List

| REF. # | PART NUMBER | PART NAME                      | QTY |
|--------|-------------|--------------------------------|-----|
| 1      | 3615001     | Crankcase                      | 1   |
| 2      | 3615002     | Gasket, crankcase              | 1   |
| 3      | 3615003     | Cover, crankcase               | 1   |
| 4      | 3615004     | Oil cap                        | 1   |
| 5      | 3615005     | O-ring, oil cap                | 1   |
| 6      | 3615006     | Plug, ¼ brass                  | 3   |
| 7      | 3615007     | Oil Gauge                      | 1   |
| 8      | 3615008     | O-ring, oil gauge              | 1   |
| 9      | 3615009     | Drain Plug, ¼                  | 3   |
| 10     | 3615010     | Screw, rear cover M6x15        | 8   |
| 11     | 3615011     | Washer, rear cover             | 8   |
| 12     | 3615012     | Ring hook, M12x1.75            | 1   |
| 13     | 3615013     | Pin, crankcase                 | 2   |
| 14     | 3615014     | Oil seal, plunger rod          | 3   |
| 15     | 3615015     | Crankshaft                     | 1   |
| 16     | 3615016     | Connecting rod assembly        | 3   |
| 17     | 3615017     | Plunger pin                    | 3   |
| 18     | 3615018     | C-ring, plunger pin            | 6   |
| 19     | 3615019     | Plunger rod                    | 3   |
| 20     | 3615020     | Stop slice                     | 3   |
| 21     | 3615021     | Plunger, ceramic               | 3   |
| 22     | 3615022     | Back-up ring, plunger retainer | 3   |
| 23     | 3615023     | O-ring, plunger retainer       | 3   |
| 24     | 3615024     | Washer, plunger retainer       | 3   |
| 25     | 3615025     | Plunger retainer               | 3   |
| 26     | 3615026     | Wick holder, seal retainer     | 3   |
| 27     | 3615027     | Oil wick                       | 3   |
| 28     | 3615028     | Key, 10x8x75                   | 1   |
| 29     | 3615029     | Bearing, crankshaft            | 2   |
| 30     | 3615030     | Oil seal, crankshaft           | 2   |
| 31     | 3615031     | O-ring, bearing cover          | 4   |
| 32     | 3615032     | Bearing cover                  | 2   |
| 33     | 3615033     | Bolt, bearing cover M8x25      | 8   |
| 34     | 3615034     | Shaft protector                | 1   |
| 35     | 3615035     | Washer, bearing cover          | 10  |
| 36     | 3615036     | Bolt, shaft protector M8x16    | 2   |
| 37     | 3615037     | Manifold, Stainless Steel      | 1   |
| 38     | 3615038     | High pressure seal             | 3   |
| 39     | 3615039     | High presser seal retainer, SS | 3   |
| 40     | 3615040     | O-ring, seal retainer          | 3   |
| 41     | 3615041     | Low pressure seal              | 3   |
| 42     | 3615042     | Valve plug                     | 6   |
| 43     | 3615043     | Back-up ring, valve plug       | 6   |
| 44     | 3615044     | O-ring, Valve plug             | 6   |
| 45     | 3615045     | Spring, valve plug             | 6   |
| 46     | 3615046     | Valve assembly, includes 47-52 | 6   |
| 53     | 3615053     | Lock washer, M12               | 8   |
| 54     | 3615054     | Manifold bolt, M12x90          | 4   |
| 55     | 3615055     | Manifold bolt, M12x150         | 4   |
| 56     | 3615056     | Plug, M8x16                    | 3   |
| 57     | 3615057     | Washer                         | 3   |
| 58     | 3615058     | Tray                           | 1   |
| 59     | 3615059     | Lock washer, M6                | 2   |
| 60     | 3615060     | Screw, M6x15                   | 2   |
| 61     | 3615061     | Bushing set, connecting rod    | 3   |
| 62     | 3615062     | Gasket, bearing cover          | 2   |

## Exploded View

### Model 3615



| REF. # | PART NUMBER | PART NAME                            | QTY     |
|--------|-------------|--------------------------------------|---------|
|        | 30136       | SEAL KIT                             | 1       |
|        | 30137A      | VALVE KIT                            | 2       |
|        | 30131       | RAIL SET                             | 1       |
|        | 30103A      | OIL, Qt./32oz. bottle ISO 100, 20W40 | 6 (5.3) |

### HORSEPOWER REQUIREMENTS

| 3615 |      |       | Pressure (psi) |      |      |      |      |
|------|------|-------|----------------|------|------|------|------|
| RPM  | GPM  | LPM   | 800            | 900  | 1000 | 1200 | 1500 |
| 400  | 18.5 | 72.4  | 9.8            | 11.0 | 12.2 | 14.7 | 18.5 |
| 600  | 27.3 | 108.6 | 14.5           | 16.4 | 18.2 | 21.8 | 27.3 |
| 800  | 36.0 | 136.1 | 19.2           | 21.6 | 24.0 | 28.8 | 36.0 |